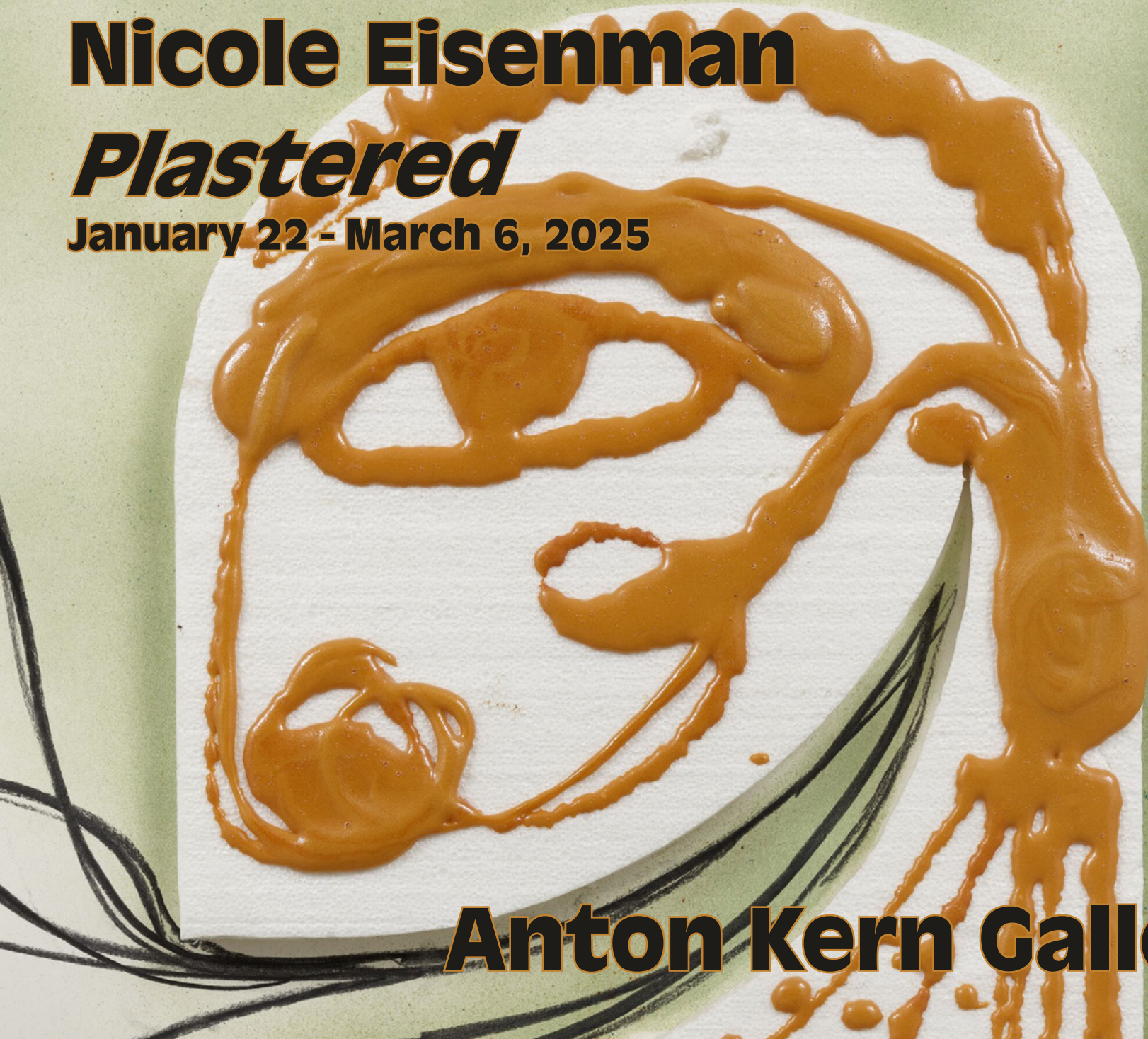


Nicole Eisenman

Plastered

January 22 - March 6, 2025



Anton Kern Gallery

TOMBSTONES TALKING



Nicole Eisenman

Conversation, 2023

Charcoal, Aqua Resin, polystyrene, expanding foam,
fiberglass and spray paint on paper

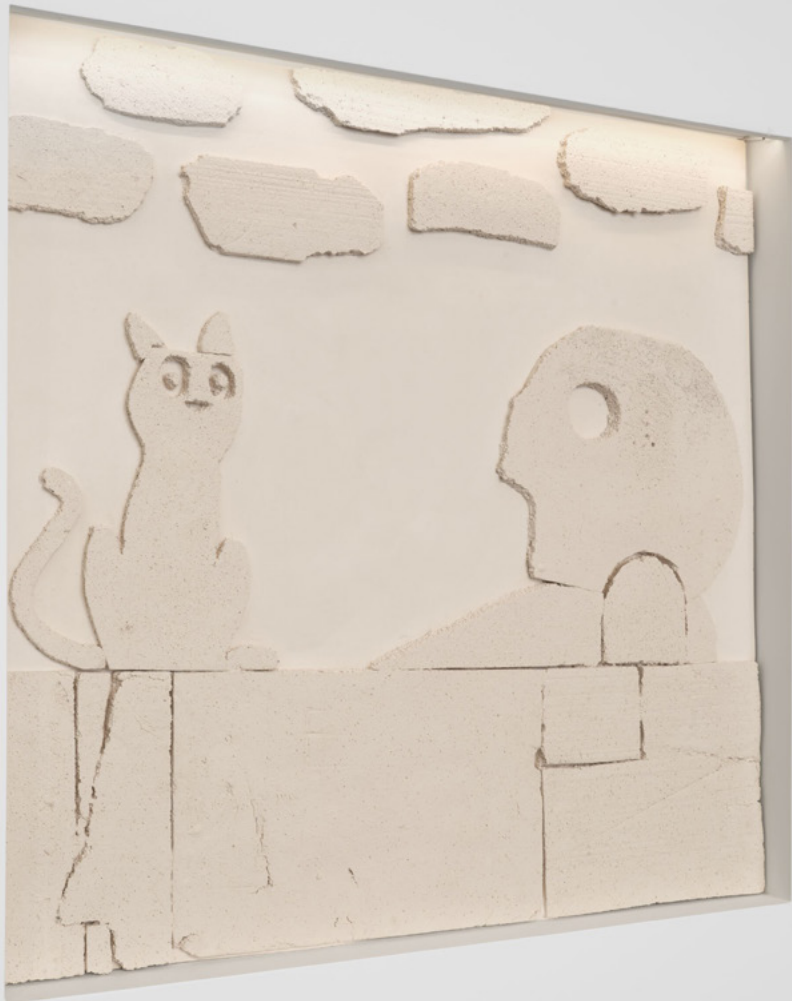
46 3/4 x 56 1/4 x 2 3/4 inches

(118.7 x 142.9 x 7 cm)





Nicole Eisenman
Bathtub Relief, 2022-2023
Aqua-resin and fiberglass
42 1/4 x 42 x 3/4 inches
107.3 x 106.7 x 1.9 cm
Edition of 2



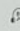


Nicole Eisenman: Prince

In late 2011, Nicole Eisenman (b. 1967), known primarily as a painter at the time, set out on a year-long intensive exploration of printmaking. She made numerous prints on her own, then set up weekly appointments with three New York print workshops, *Printed & Inked*, *Range Press Editions*, and *10 Grand Press*. Working collaboratively with expert printers, Eisenman would learn new techniques and build close relationships that continue today. As told, she has made over 100 prints.

Eisenman's prints are created using wood, stone, metal, linoleum, stone, and paper, and are often made in collaboration with her printers. Eisenman makes, gouges, scrapes, builds up, draws and prints on the printing blocks, providing her work its printing and sculpture. Moreover, the relation and connection afforded by printmaking creates space for creative experimentation; we see how Eisenman adds and subtracts elements to develop a final composition, or how she creates physical juxtapositions of a single image through iterations in ink, pressure, and timing. These iterations are not just facilitated by the printers with whom Eisenman works; rather, they result from the creative tension between artist and printer, which allows room for chance and risk.

These works also reflect the reclamation of subjects in Eisenman's practice, where we see a wide-range of themes and an historical distance range from a range of contemporary life, friends, strangers, and imagined characters populate these works. Knowing, trying, working, carving in block, and sitting for portraits all resulted with Eisenman's signature humor, empathy, and wit.

 This exhibition is accompanied by audio content available by downloading the *Thinking Commons* app on major devices.

Nicole Eisenman: Prince was originally organized by Loretta Bartlow at the University Museum of Contemporary Art at the University of Massachusetts, Amherst. The presentation at Print Center New York is organized by Ann Rosenthal, Director of Exhibitions & Programs, and Judy Harker, Executive Director.

Large print labels are available at the welcome desk.

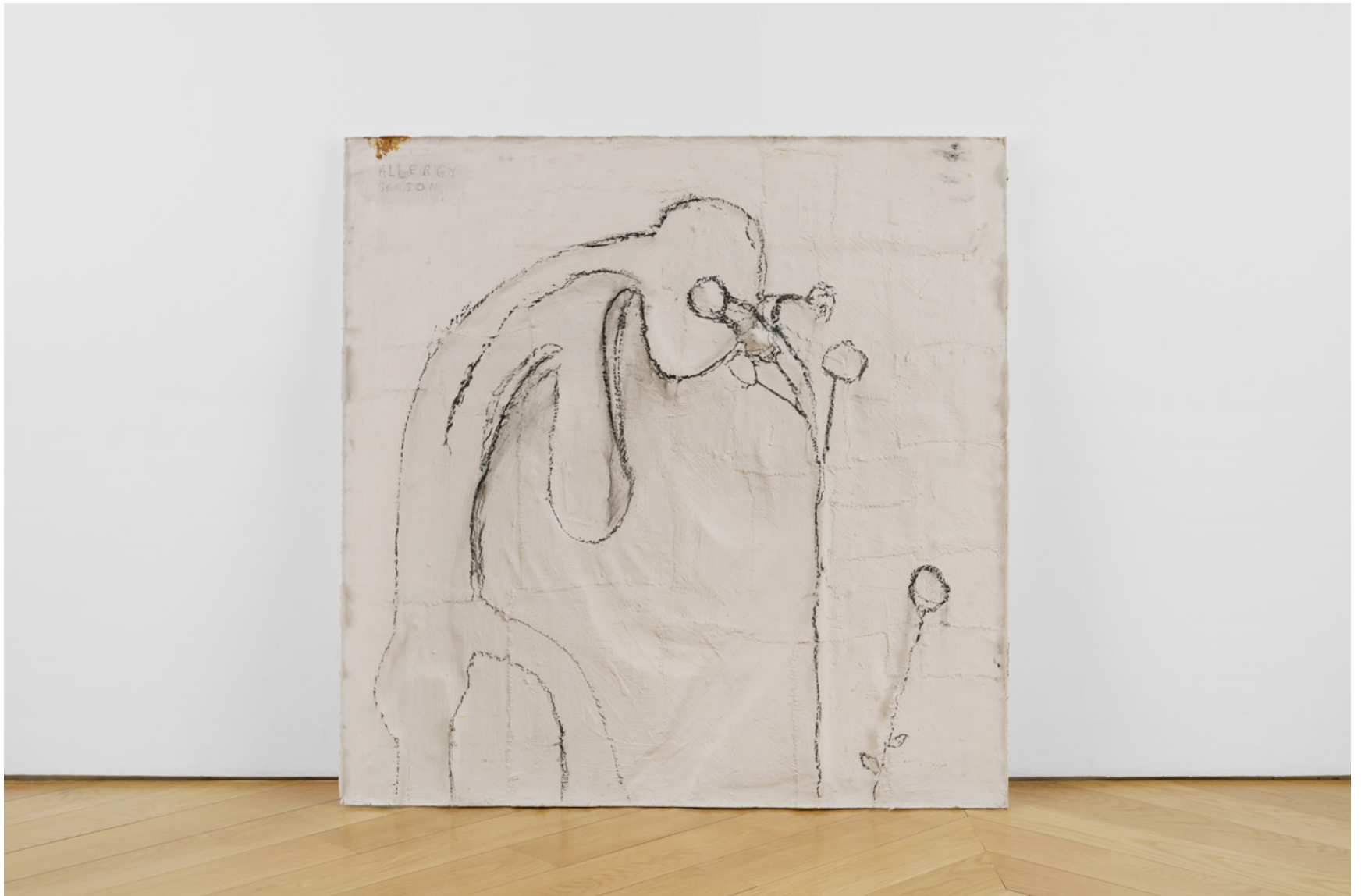




Nicole Eisenman
Untitled Head, 2025
Oil on canvas
18 x 14 inches
45.7 x 35.6 cm

Nicole Eisenman
Plaster Plaque 10, 2013
Mixed media on plaster
18 1/2 x 16 x 3 inches
47 x 40.6 x 7.6 cm





Nicole Eisenman

Allergy Season, 2022-2024

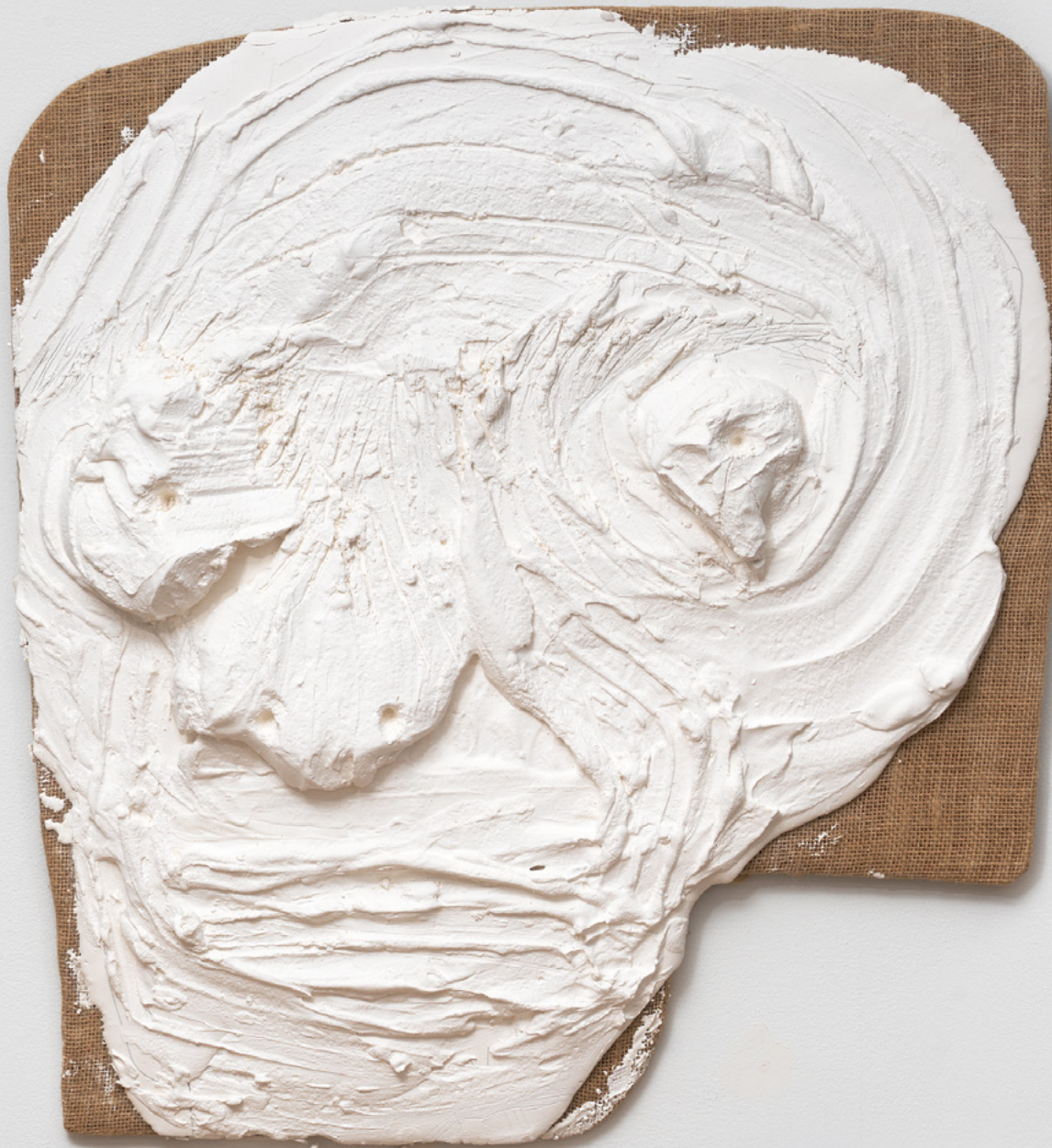
Charcoal and pencil
on Aqua-Resin and fiberglass

42 x 42 x 2 inches

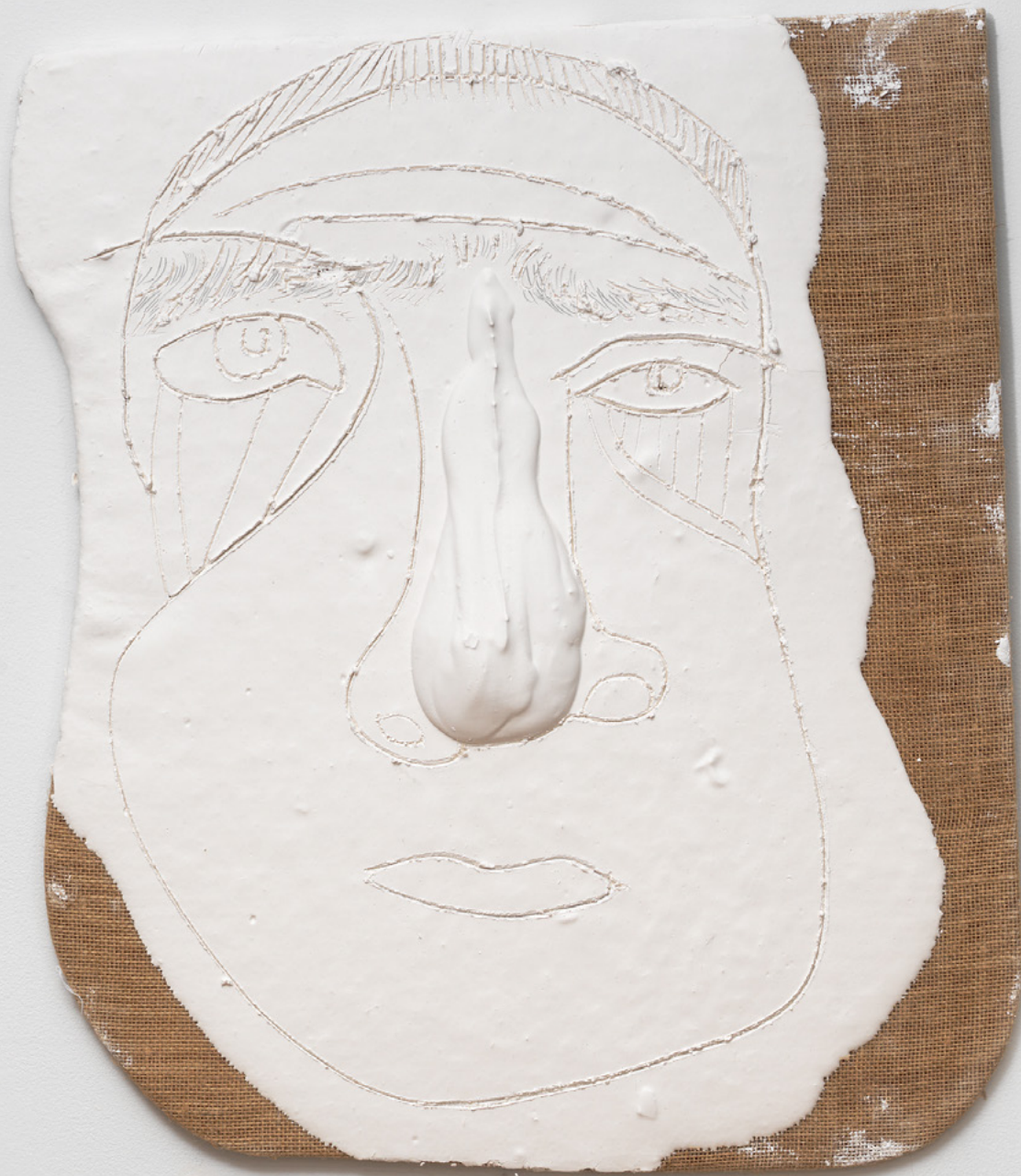
106.7 x 106.7 x 5.1 cm

Nicole Eisenman
Understudy, 2012

Pencil and plaster on burlap and wood
29 x 26 inches
(73.7 x 66 cm)







Nicole Eisenman

Understudy, 2012

Pencil and plaster on burlap and wood

29 x 26 inches

(73.7 x 66 cm)

Nicole Eisenman
Understudy, 2012
Plaster on burlap and wood
29 x 26 inches
(73.7 x 66 cm)







Nicole Eisenman

Understudy, 2012

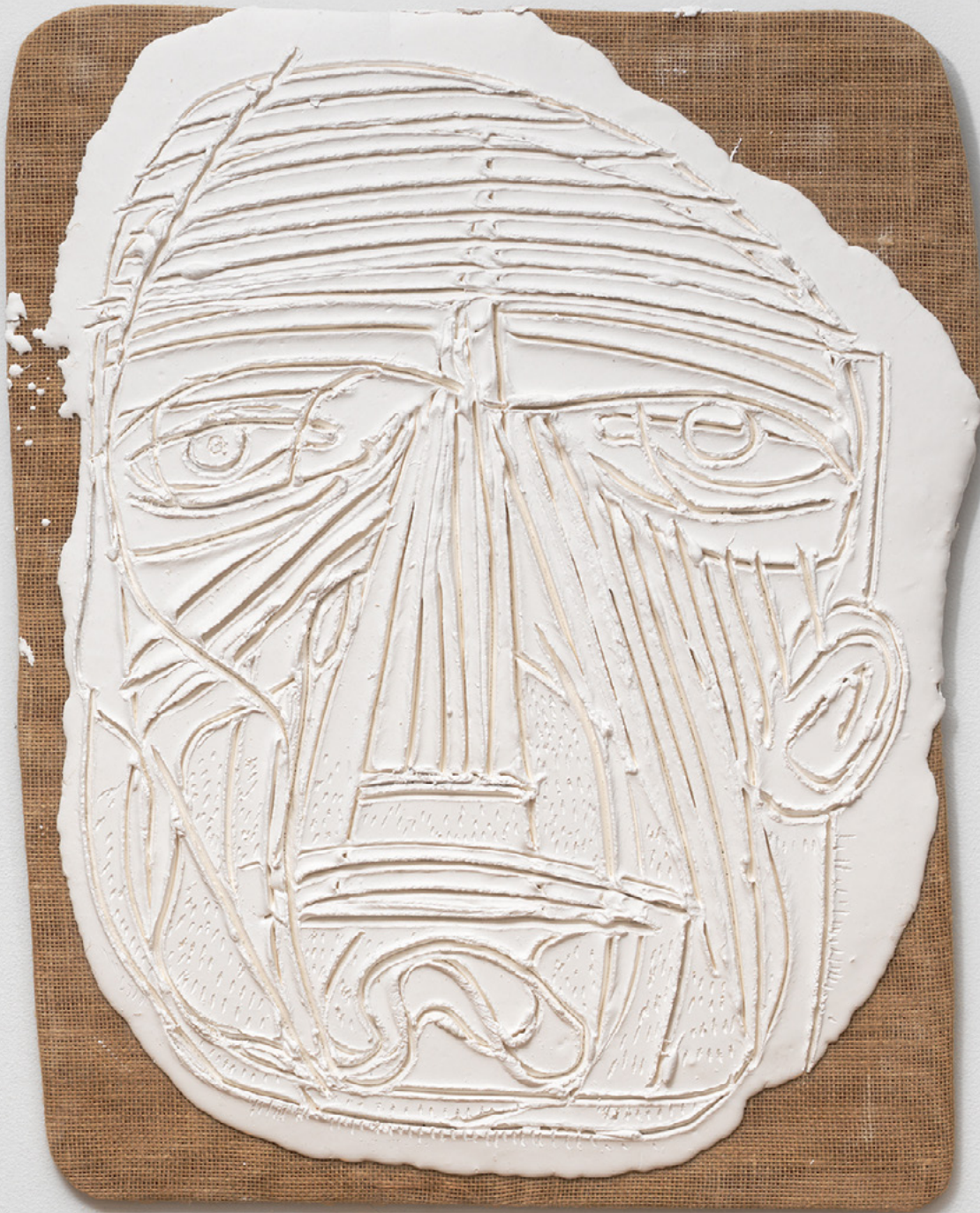
Pencil and plaster on burlap and wood

29 x 26 inches

(73.7 x 66 cm)

Nicole Eisenman
Understudy, 2012

Pencil and plaster on burlap and wood
29 x 26 inches
(73.7 x 66 cm)







Nicole Eisenman

Understudy, 2012

Plaster on burlap and wood

29 x 26 inches

(73.7 x 66 cm)

Nicole Eisenman
Understudy, 2012
Pencil and plaster on burlap and wood
29 x 26 inches
(73.7 x 66 cm)





Nicole Eisenman

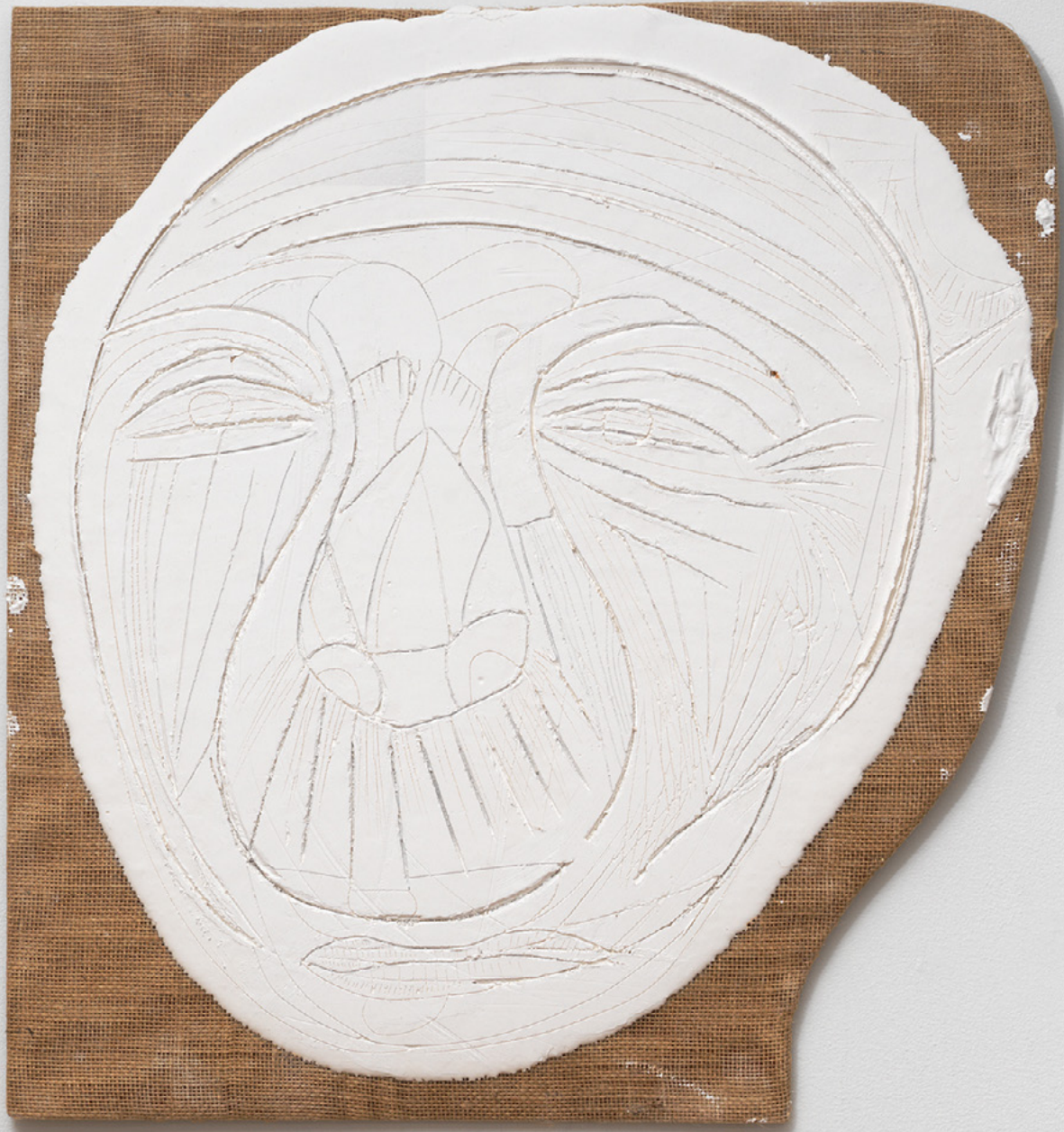
Understudy, 2012

Pencil and plaster on burlap and wood

29 x 26 inches

(73.7 x 66 cm)





Nicole Eisenman
Understudy, 2012

Pencil and plaster on burlap and wood
29 x 26 inches
(73.7 x 66 cm)

In her sculptural work, New York artist Nicole Eisenman, has long favored plaster as a material for its sensual, visceral, and intuitional qualities. The exhibition "Plastered" at Anton Kern Gallery features ten relief portraits titled "Understudies," along with two large wall reliefs, one of which depicting a bather with a cat, and various recent works including a new portrait painting. The material's natural appearance and color create an atmosphere both warm and personal as well as acute and thought provoking.